

# Advisor™ 7.5 – New Features Operation Guide

## Introduction:

Advisor™ VII SP5 continues the great features which were added into Advisor VII.

This version supports the new and revolutionary DiaExpert Edge system, improvements within the great CAP Auto planner feature, and some more features that will improve the productivity of the planning procedure.

## Measurement settings authorization:

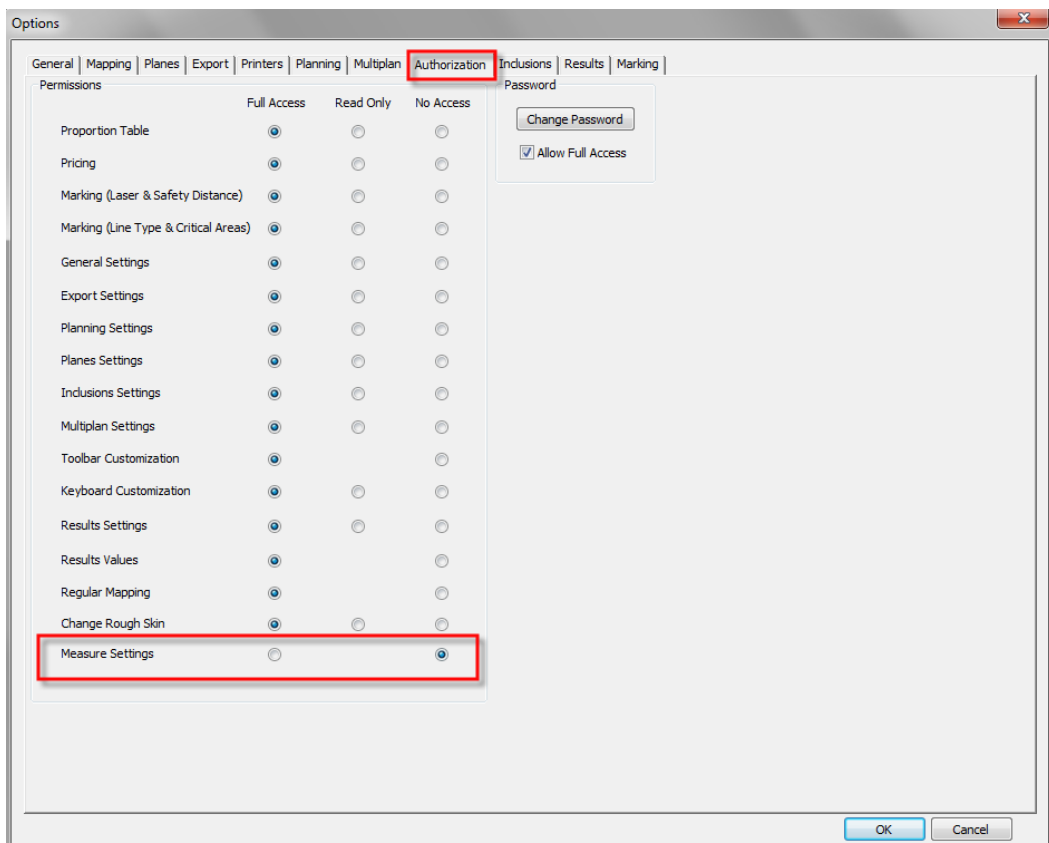
Advisor Administrator can now lock the scanning speed in order to prevent the DiaExpert systems operator from scanning stones with an unauthorized mapping method.

## Procedure description:

### Defining the Measure Settings to be locked by an Advisor administrator:

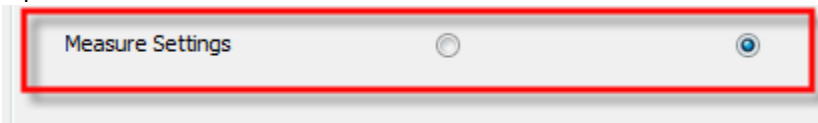
Locking or unlocking the Measure settings speed option can be done only by an approved Advisor administrator.

1. Go into the Options dialog window → enter the 'authorization' tab.

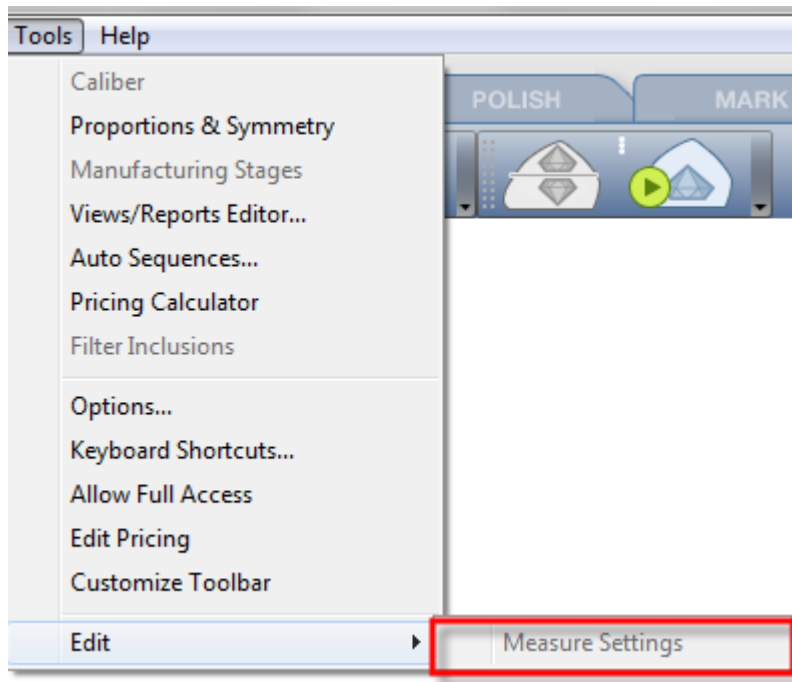


# Advisor™ 7.5 – New Features Operation Guide

2. Under the 'Measure Settings' field → checkmark the 'No Access' option.



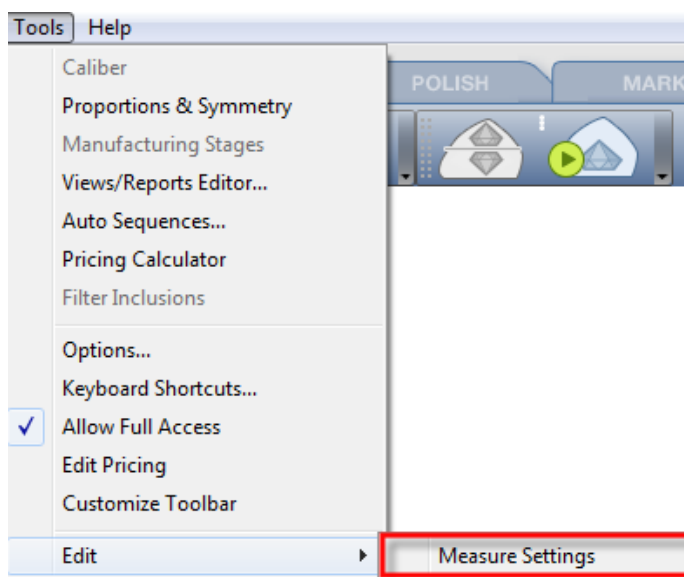
3. Click the 'ok' button to exist the options dialog window.
4. Go into 'tools' → 'edit' – make sure the 'Measure settings' option is now disabled:



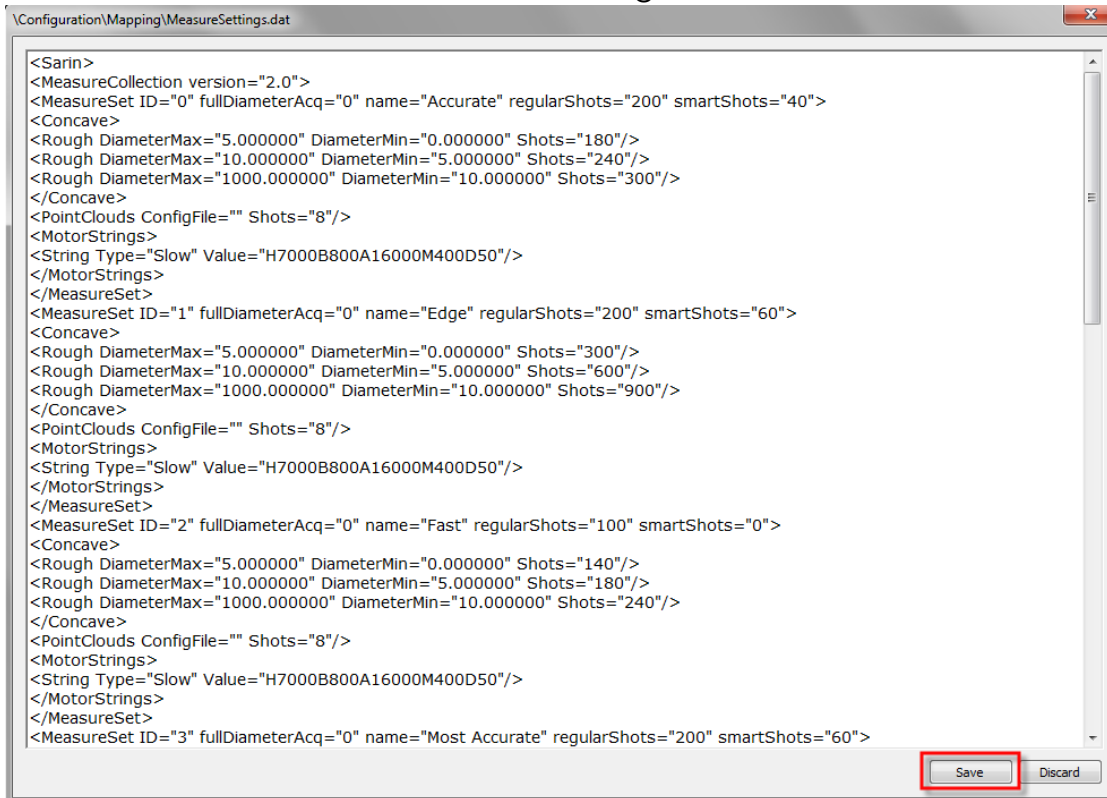
## Changing the Measure settings:

This can be done only by an approved Advisor administrator

1. Go into Tools → Edit → click on the 'Measure Settings' menu option.



2. Edit the requested parameters
3. Click the 'Save' button to save the changes:



4. Click the 'Dismiss' button to discard any changes.

## Auto planner improvements:

2 new options were added into the Auto Planner (CAP) feature:

1. Defining the state of the inclusions near the rough surface.
2. Ability to quickly choose the CAP program to be run by right clicking on the Auto planner button and choosing the desired program.

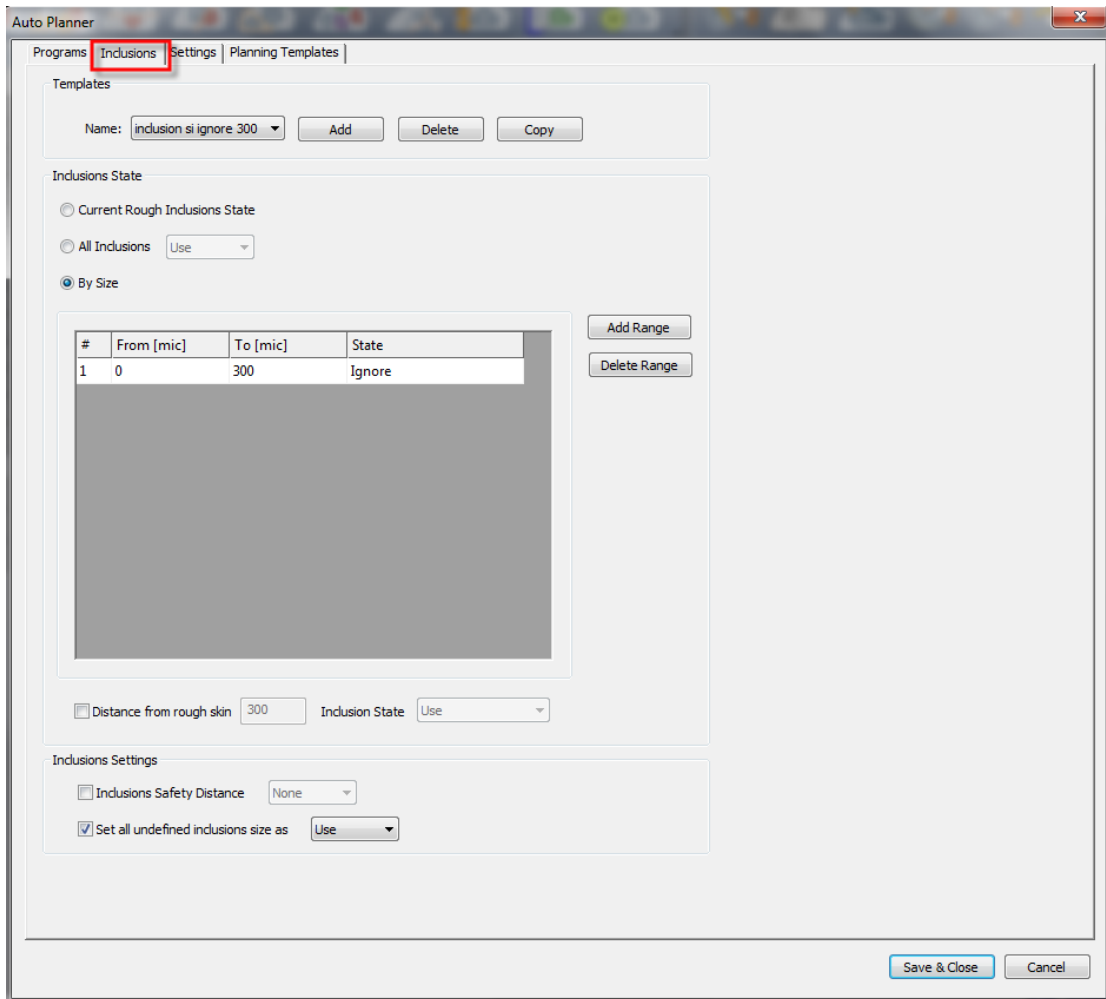
## Procedure description:

### Defining the state of the inclusions near the rough surface:

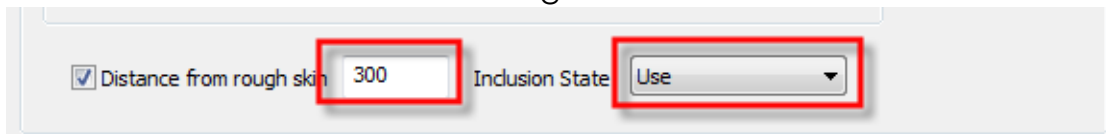
1. Click on the 'auto planner' button



## 2. Go into the 'inclusions' tab



3. Choose an existing Inclusions template or create a new Inclusions template (see Advisor 7.0 New Features operation guide, on how to create or manipulate the Inclusions template).
4. Checkmark the 'distance from rough skin'



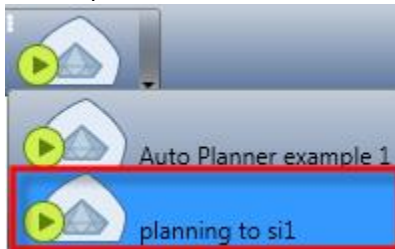
5. Determine the distance of inclusions to be manipulated (by microns), from the rough skin surface.
6. Inclusion State field: Determine the inclusions state to be used ('Use' or 'Ignore' or any other state) for the given rough skin distance.
7. For example: When choosing 300 microns from the rough skin and the Inclusions state in 'use' state: When the Auto Planner will run on this template, all inclusions from the rough skin till 300 microns from it will be manipulated with the 'use' state (will be taken into account) during the allocation of the planned polished stone.

# Advisor™ 7.5 – New Features Operation Guide

Quick choosing the desired Auto Planner template to be run:

With Advisor 7.5, you can now quickly choose the requested predefined template which was created under the 'auto planner', and execute the running process immediately, in a single button click.

1. Right click on the Auto Planner button
2. Choose the requested template to be executed.
3. Example:



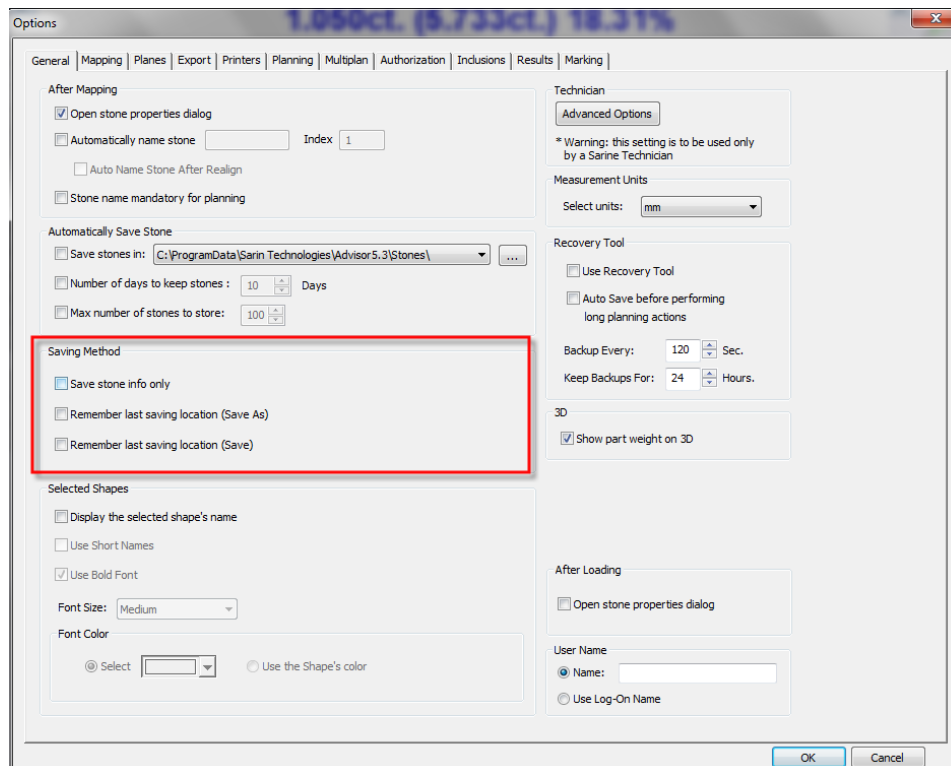
Remember last save location:


Save the stone to the last folder's location, when working with large number of stones, which are located under different folders.

Procedure description:

Defining (remember) last saving location during saving:

1. Go into the Options dialog window → General tab → Saving Method new section:




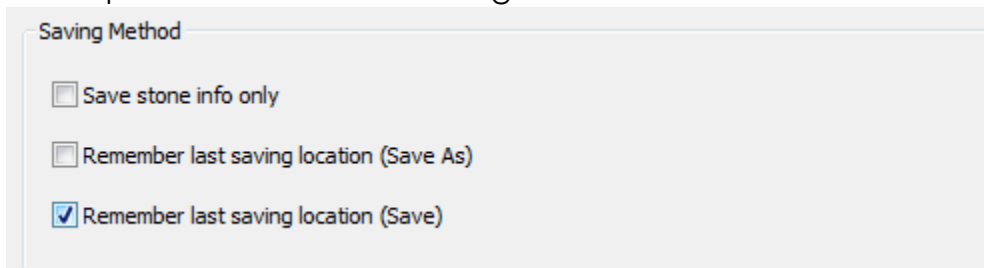
2. Remember last saving location (Save As) – When check marking this option, the current stone, will be saved under the last saved location of the previous stone when using the 'Save as'  button.



The screenshot shows a dialog box titled "Saving Method" with three options:

- Save stone info only
- Remember last saving location (Save As)
- Remember last saving location (Save)

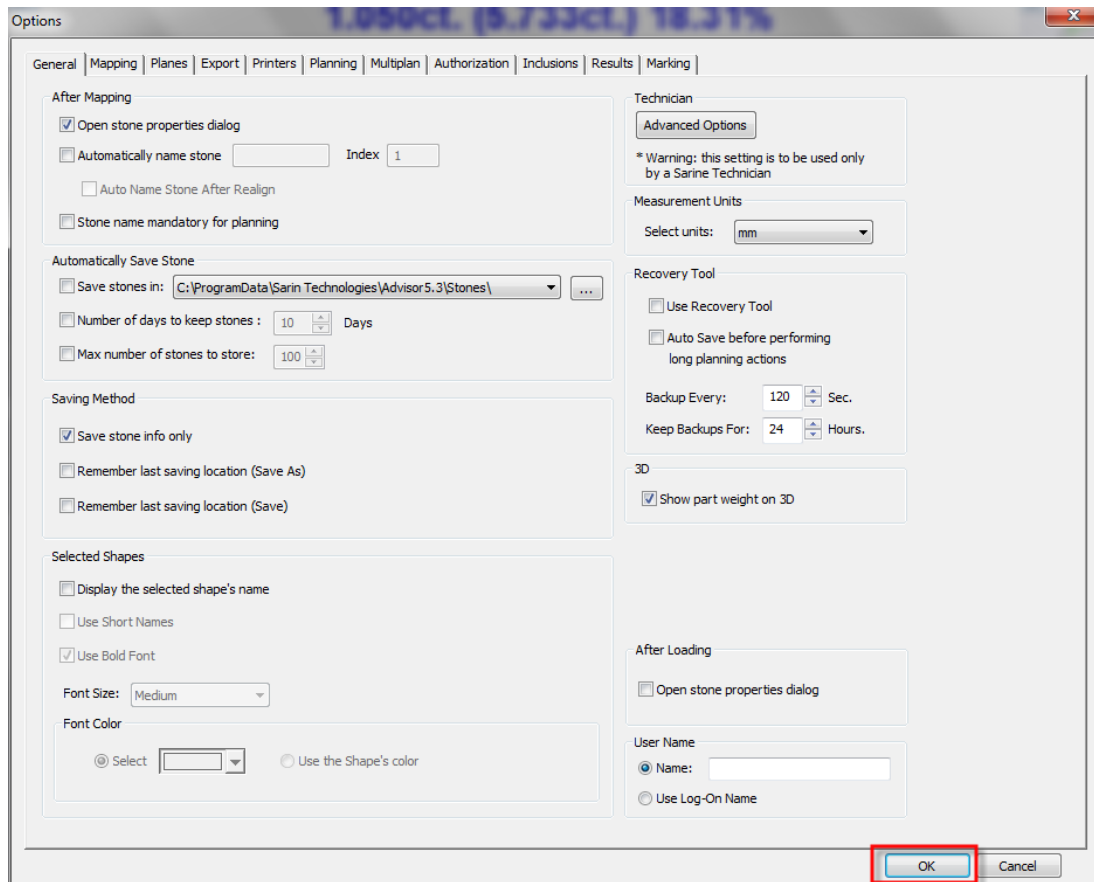
3. Remember last saving location (Save) – When check marking this option, the current stone, will be save under the last saved location of the previous stone when using the 'Save'  button.



The screenshot shows a dialog box titled "Saving Method" with three options:

- Save stone info only
- Remember last saving location (Save As)
- Remember last saving location (Save)

4. Click the 'ok' button (lower right hand side of the window) → to save the changes.

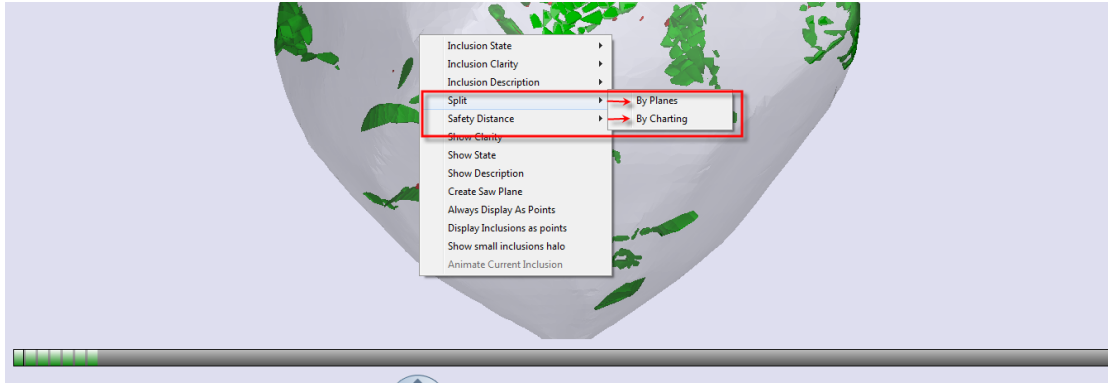


## Split inclusions during allocation:

Increase productivity by allowing the planner to split inclusions during long process allocations (such as galaxy stones with many inclusions under the 'use' state).

## Procedure description:

1. Plan a stone in advisor using any desired basic planning option.
2. During the allocation, hover over the requested inclusion → right click → choose the requested splitting option ('by planes' OR 'by charting').



3. Split the chosen inclusion as requested
4. Please refer to the 'Split by charting' Advisor 6.x movie for further information regarding how to use the split advanced option:  
[https://www.youtube.com/watch?v=xNVKgDDtJRw&index=1&list=P\\_Lcummd6mXNW1qtwLZ0VFm1uotwb8x4RMn](https://www.youtube.com/watch?v=xNVKgDDtJRw&index=1&list=P_Lcummd6mXNW1qtwLZ0VFm1uotwb8x4RMn)

## Parallel Window size:

This existing feature, was improved with Advisor 7.5, and now shows the size of the common window area to be displayed, enabling the user to easily make a decision about the right location of the planes.

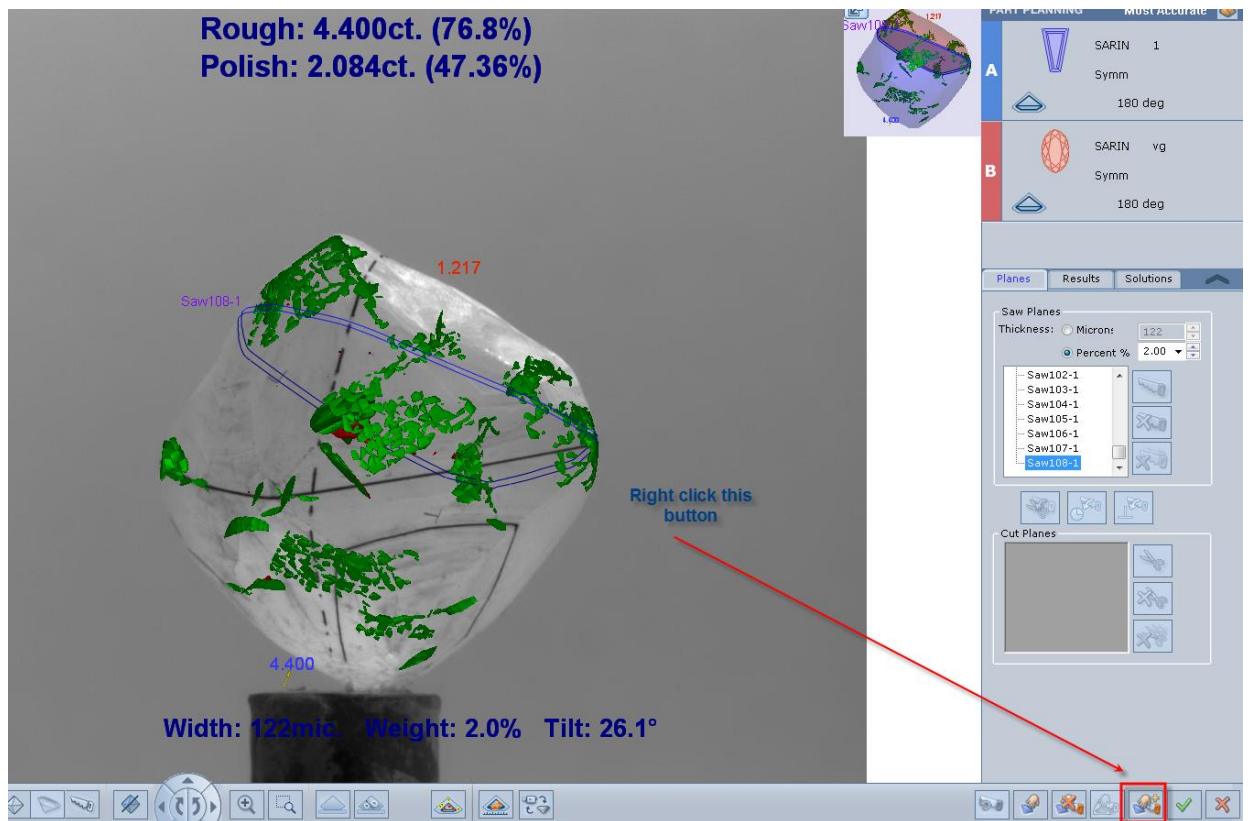
## Procedure description:

1. Plan a stone in Advisor.
2. Click on any of the automatic add sawing options buttons:

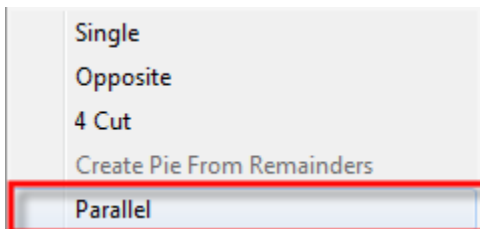




3. Right click on the 'add saw' button

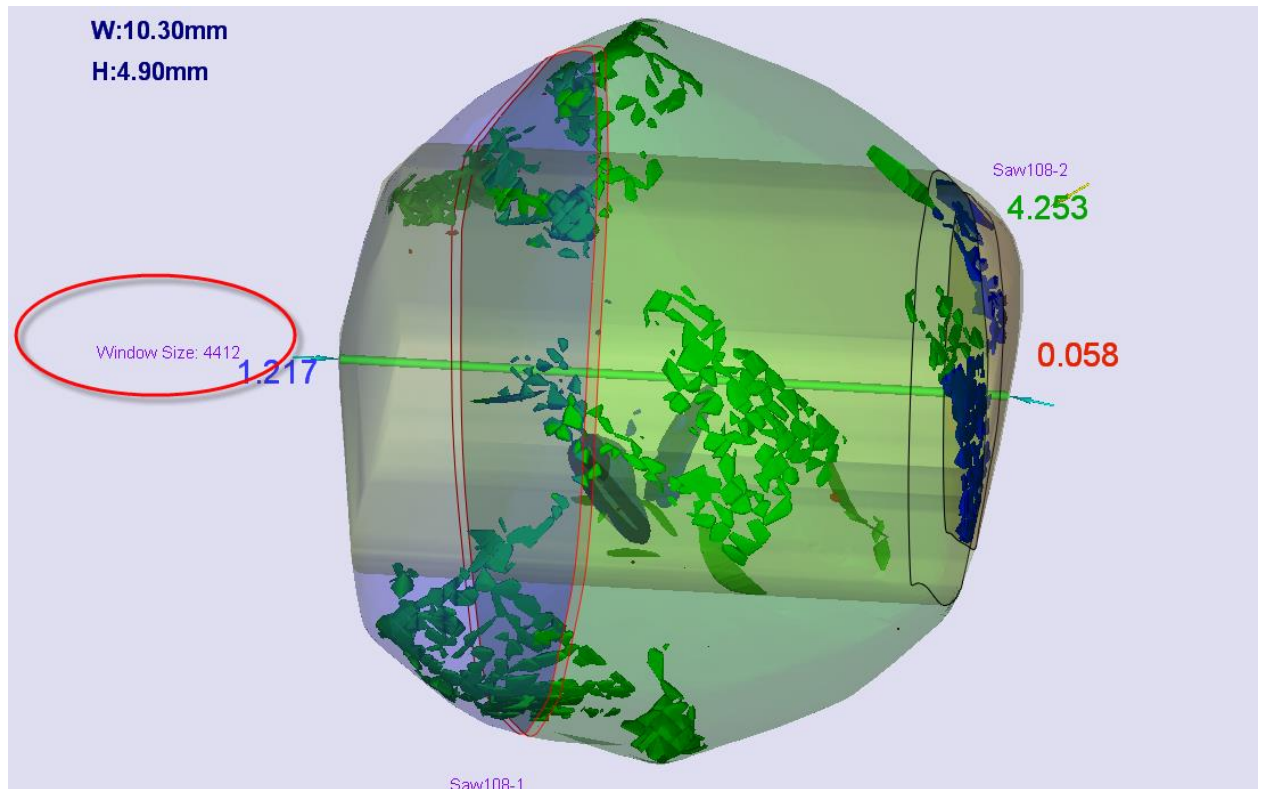


4. Choose the 'parallel' menu option.



# Advisor™ 7.5 – New Features Operation Guide

5. For further information on how to use the 'parallel' windows, please refer to 'Advisor 7.0 New features operation guide'.
6. Size of the window will show up

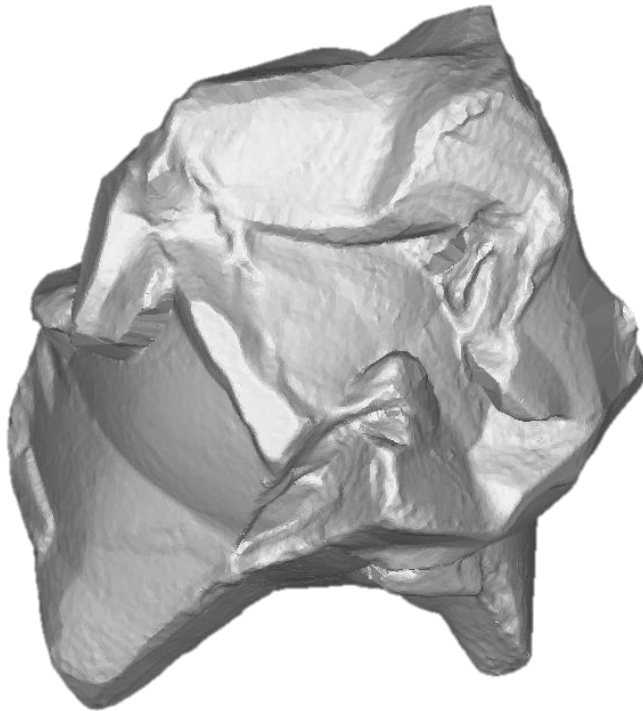


## DiaExpert Edge – 2 orientations mapping option:

Advisor 7.5 support the new and revolutionary DiaExpert Edge systems.

DiaExpert Edge provides unprecedented levels of accuracy, capturing even the most minute surface features and textures with incredible precision.

With the 2 phase orientation buttons, the user can capture all inclusions with their full accurate concaves data.



## Procedure description:

1. Map the stone using the 'measure 1st orientation' button



2. Place the stone on a different position (If possible, around 90 degrees from the first orientation position), with concaves facing the camera.
3. Click on the 'start two ways mapping' button (button will become enabled only after the first measurement was finished).

