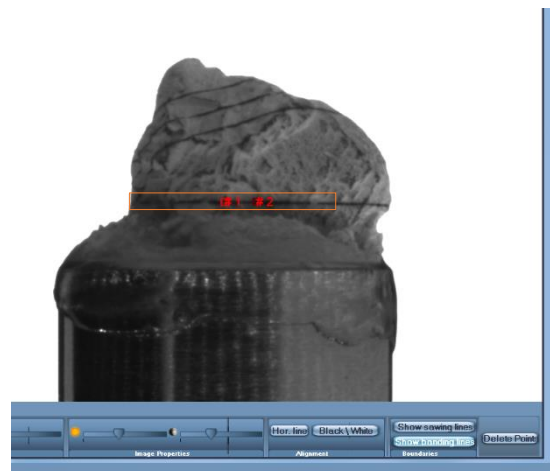
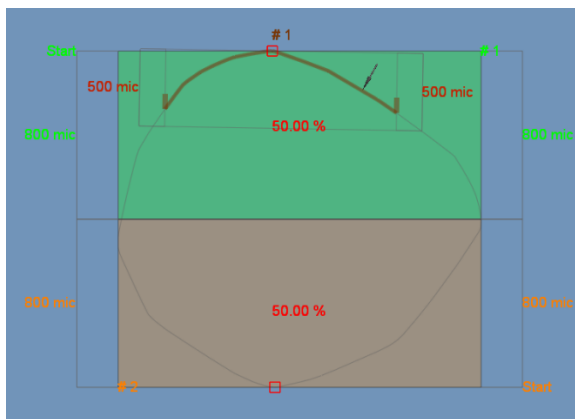


Strategist™ 3.2 Release Notes

Sarine is proud to present the new strategist 3.2 version which offers a new working experience with the "NO CAP" mode that enables you more flexibility in the strategist/Quazer sawing process!

New features:

1. **Compatibility to advisor 6.0** – The new Strategist 3.2 supports advisor version 6.0 using AXP files (Advisor ExPort type files). *Currently with no support of asymmetric/simplified/user shapes.*
2. **Import Pack** – Restore previously planned stones on strategist with the new STGX import! This new feature allows you to re-load stones that were planned on the strategist station in case of system failure or simply when there is a need to edit stones that were already planned – **saving you time!**
3. **Sawing width Predication** – Reduce user errors! See the virtual predication of the sawing and banding width profiles on the stone live video in order to verify sufficient saw plane width that was defined during the planning stage.



4. **Various Bugs fix.**