

Introduction:

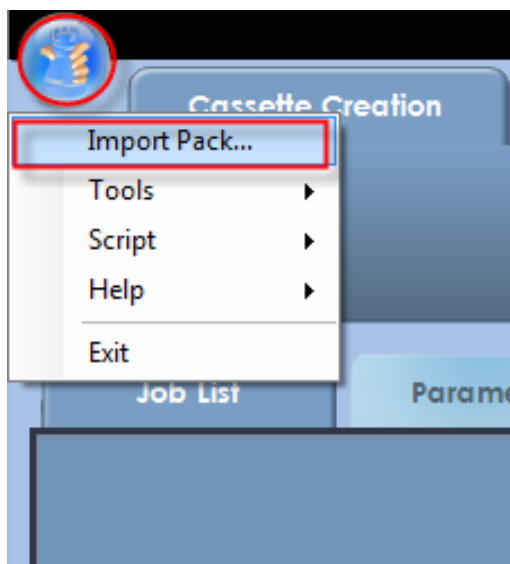
Sarine is proud to present the new strategist 3.2 version which offers a new working experience with the "NO CAP" mode that enables you more flexibility in the strategist/Quazer sawing process!

Import Pack:

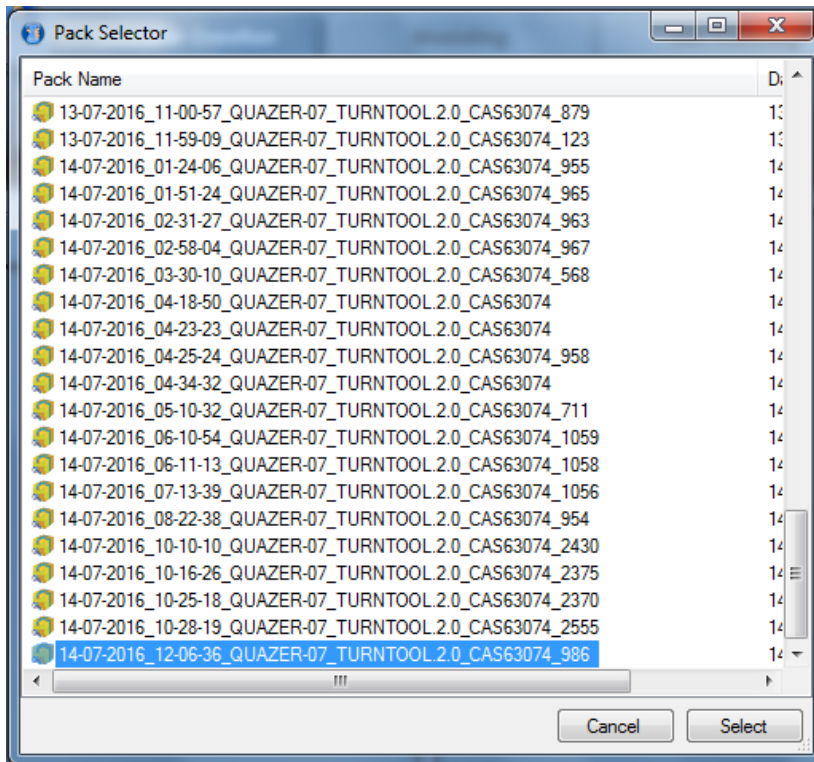
Restore previously planned stones on strategist with the new STGX import!

The feature allows you to re-load stones that were planned in the strategist station in case of system failure or simply when you want to replan the stone and save time!

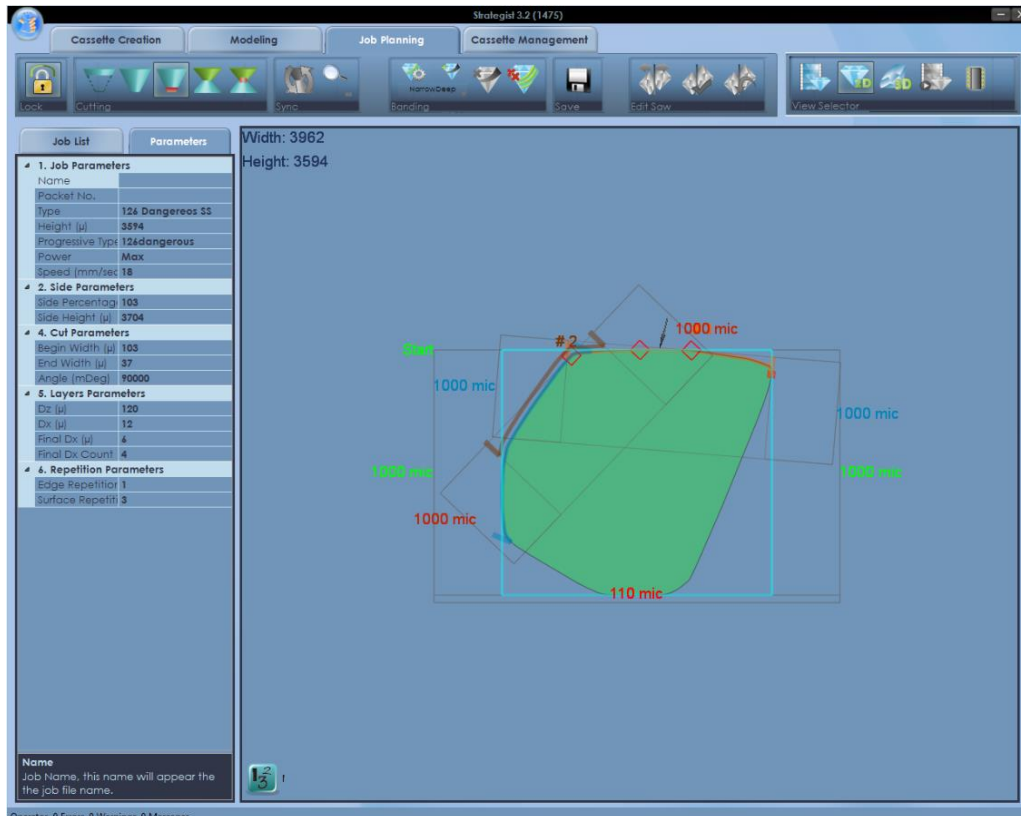
1. Click the Main Menu button
2. Choose the: 'Import Pack' menu item.



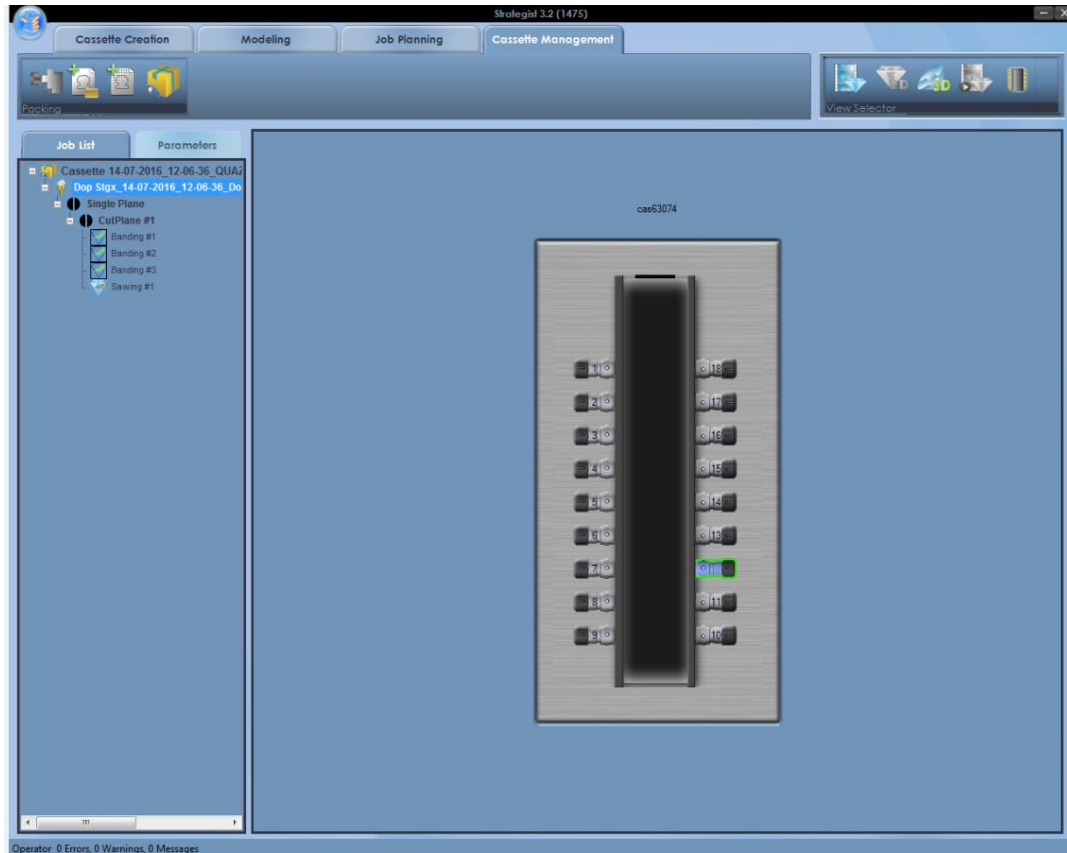
3. Pack selector dialog box will open up(see picture below):



4. Select the pack in which you want your correction.
5. Once the pack is been selected → click on the 'Select' button.
6. You may change anything within the 'Job Planning' Tab (Optional):



7. You may go to the 'Cassette management' Tab, and make any additional changes (optional):



8. After requested changes were made → Click the 'Save' Button.



9. Click the 'Packing' button.



10. Click on the 'Pack & Go' button.

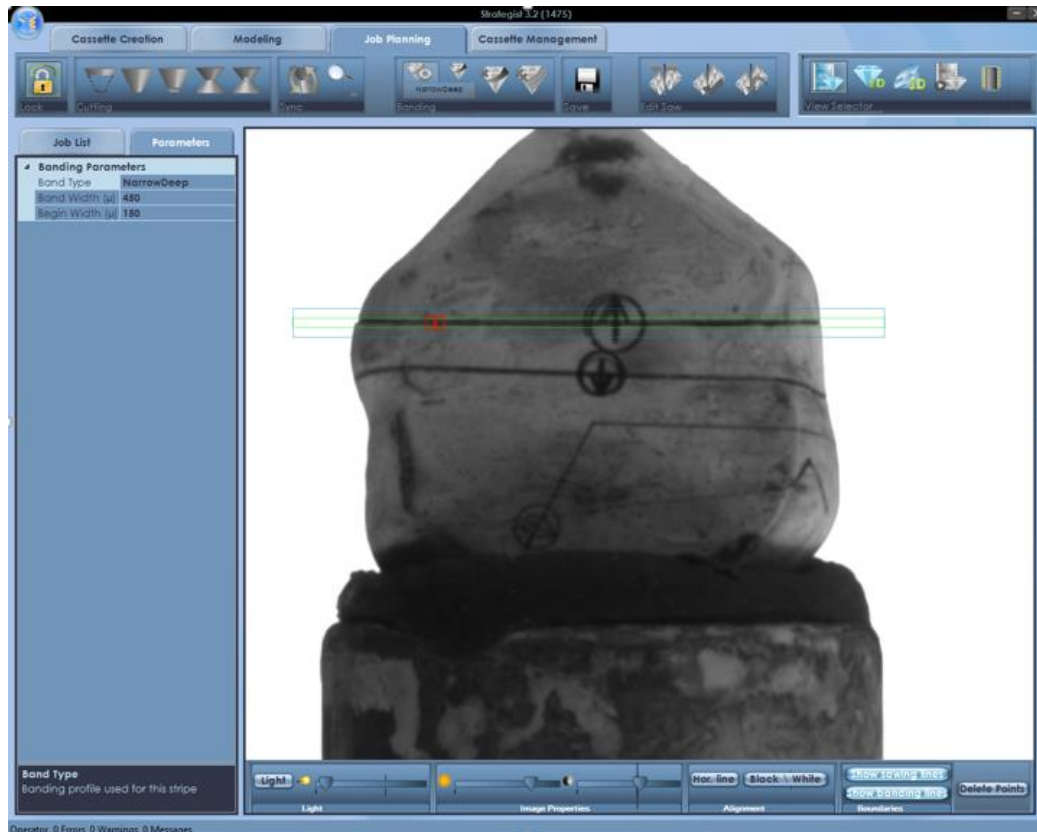


11. Your changes are now done with this pack, and you can check the changes that were made on the Quazer.

Sawing width Predication:

With this new feature, you can see the virtual predication of sawing and banding width profiles on the stones combined with live video, thus, verify the sufficient sawing plane width that was defined during the planning stage.

1. After mapping the stone regularly, and applying the requested banding → You can now see the boundaries lines with the live video view (see picture below):



2. To see the sawing boundaries lines, use the new buttons on the lower left side of the screen:
 - a. 'Show sawing lines' – To show on the screen the planned sawing lines.
 - b. 'Show banding lines' – To show on the screen the planned banding lines.



Compatibility to advisor 6.0

The new Strategist 3.2 supports advisor version 6.0 using AXP files (Exported from Advisor Version 6 - Onward). Currently, with no support of asymmetric/simplified/user shapes.