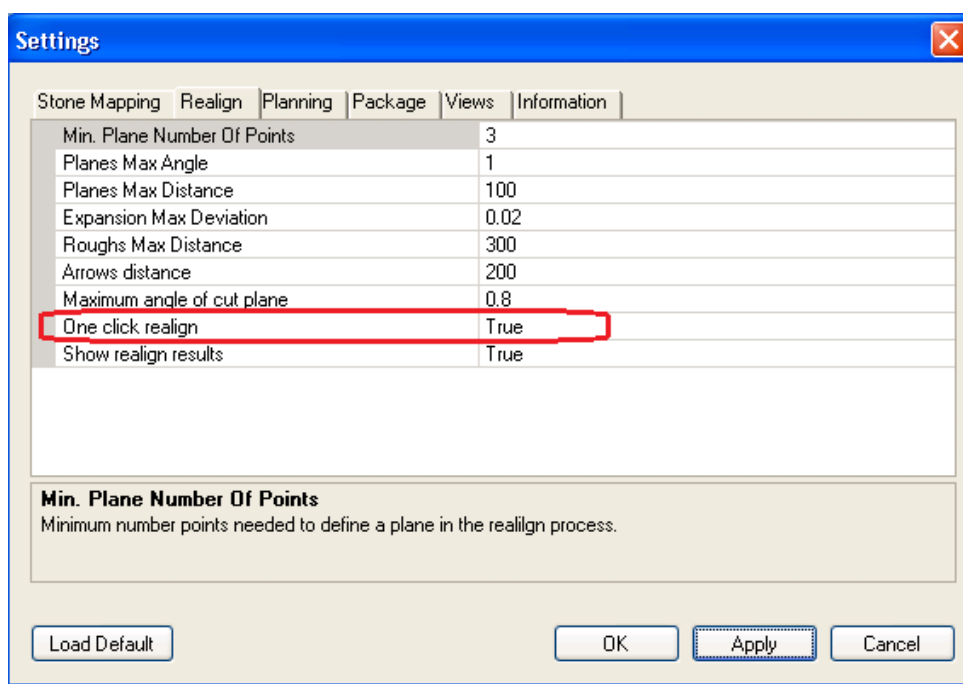


## Strategist 1.1 New Features Operation

### Quick Realign

In order to work in quick realign mode go to the settings → Realign Tab  
And set the "one click realign" to True.

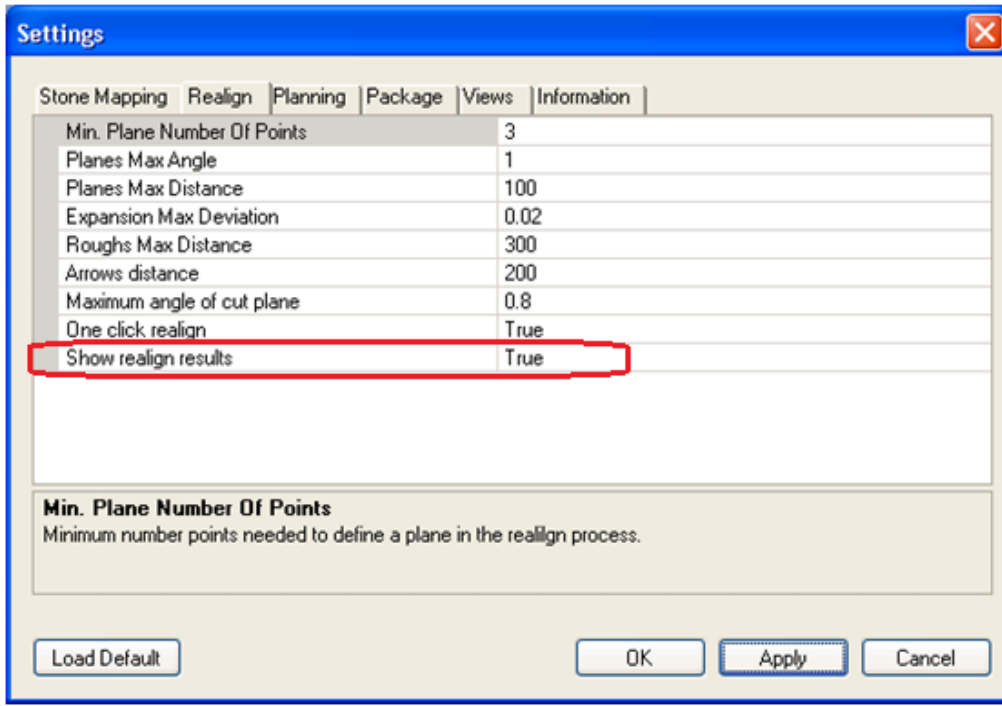


Once the one click realign will be chosen, the modeling view will be affected as follows:



## Show realign results

In order to see the realign results in the information window go to the setting → Realign Tab  
And set "Show realign results" to true.

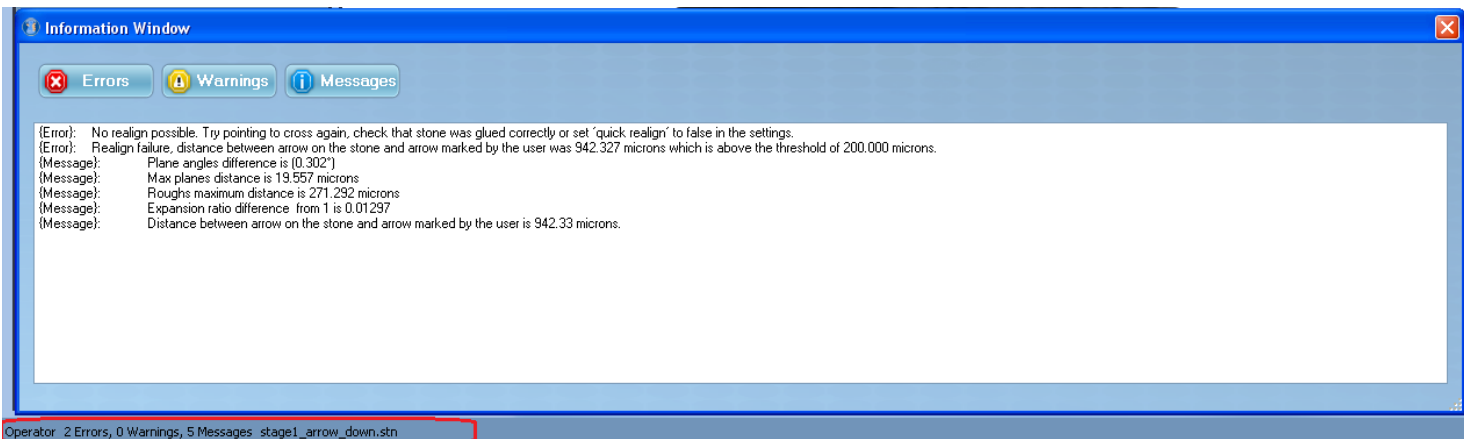


## Information window

Pressing the lower line will popup the information window

The information window contain messages of all kinds (errors, warnings and messages)

Pressing the errors and/or warnings and/or messages button will show/hide the relevant type message.



## Popup messages

In this new version of Strategist there is a new information system which enables the user

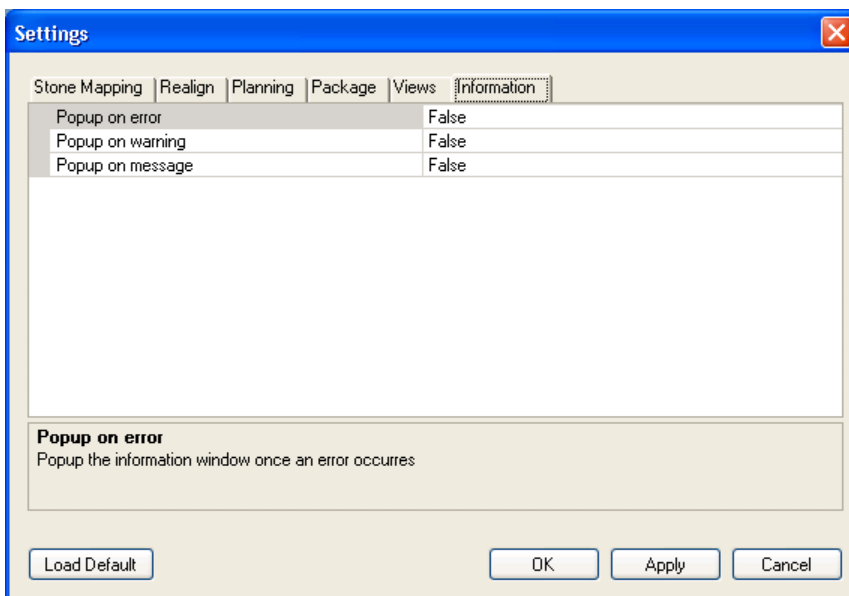
To customize which messages pop up to the user in the information window.

There are 3 types of messages.

The error messages, the warning messages, and the information messages

In order to set which type of message will pop up in the information window

Go to the settings → information tab and set the "popup on error/warning/message" fields to true.



## Keyboard shortcut:

### Loading stone Cassette management

Shortcut KEY	description
Ctrl+Q	Select target
Ctrl+T	Select cassette type
Ctrl+I	Select Type
Enter	Load stone

### Modeling screen keys

Shortcut KEY	description
Ctrl+O	Open stn
Ctrl+L+ ↑, ↓	Lens drop down
Ctrl+M	Start mapping
ESC	Stop mapping
Ctrl+1,2,3	Realign step 1,2,3
Ctrl+R	Start realign



**Job planning screen keys**

Shortcut KEY	description
Ctrl+L	Lock
Ctrl+B	Banding
Ctrl+W	Single side sawing; Toggle single side sawing with extension
Ctrl+D	Double side sawing; Toggle double side sawing with extension
Ctrl+ '='	Sync sides
Ctrl+P+ ↑, ↓	open profile box + browse through band profiles if band chosen
Insert	Add band
Ctrl+Insert	Automatic banding
Delete	Delete band
Ctrl+Delete	Delete all bands
Tab and Shift+Tab	Run through sides and bands cyclically
Ctrl+S	Save
-----	Edit saw plane
↑, ↓	Move plane
Enter	Accept and save current plane position
ESC	Restore original saw plane position

**Cassette management**

Shortcut KEY	description
Ctrl+P	Pair
Ctrl+N	Add new dop to pack
Ctrl+G	Pack and go
Ctrl+t	Create a new Cassette
↑, ↓	Choosing the derided dop In the cassette (for pairing)

**Views shortcuts**

Shortcut KEY	description
F1	Live video
F2	2D view
F3	3D view
F4	Offline video
F5	Cassette

**Object Views shortcuts**

Shortcut KEY	description
Shift +F1	Polish
Shift+F2	defects
Shift+F3	plane
Shift+F4	side view
Shift+F5	V cut view
Shift+F6	Cross view