



# DIASCAN S+™

PROPORTION SCANNER

## QUICK INSTALLATION GUIDE

**by Sarin Technologies Ltd.**



### **Limited Warranty and Disclaimer**

Sarin Technologies warrants this product to be free from defects in materials and workmanship under normal use for one year from purchase. All implied warranties and conditions (including any implied warranty of merchantability or fitness for a particular purpose) are disclaimed as to the product and this manual. Your exclusive remedy for breach of warranty will be the repair or replacement of this product or a refund of the purchase price at our discretion. In no event will Sarin Technologies Ltd. or its directors, officers, employees, or affiliates be liable to you for any consequential, incidental or indirect damages (including damages for loss of business, profits, business interruption, and the like), whether foreseeable or unforeseeable, arising out of the use or inability to use the product of this manual, regardless of the basis of the claim and even if Sarin Technologies Ltd. representative has been advised of the possibility of such damages. Sarin Technologies Ltd. liability to you for actual damages for any cause whatsoever, and regardless of the form of the action, will be limited to the money paid for the product that caused the damages.

### **Copyright © 2007**

**All rights reserved.** This document and the information contained herein belong to Sarin Ltd. ("Sarin") and may be used only as authorized by Sarin in writing. No part of this publication may be reproduced in any way without the prior written consent of Sarin. This document is subject to change without notice.

### **Trademarks**

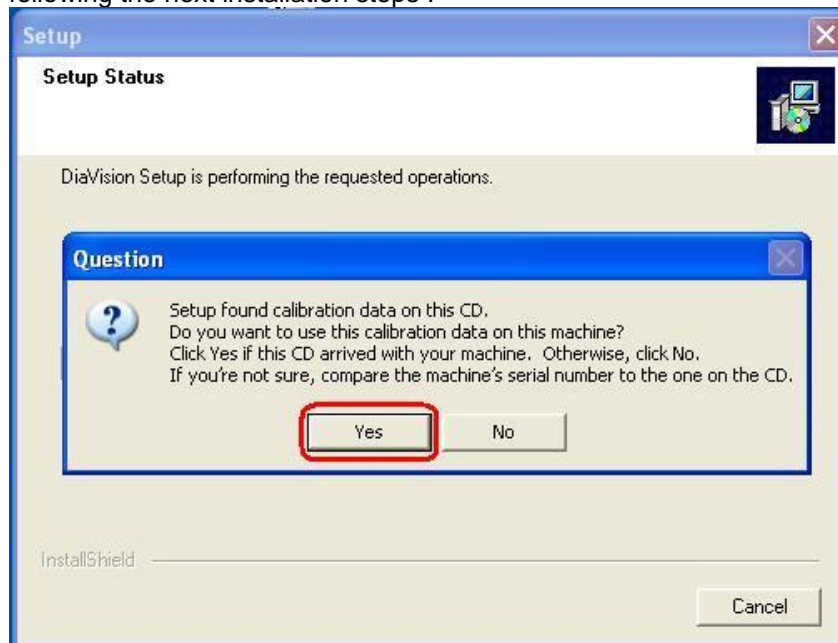
The **Sarin**<sup>®</sup> and **Advisor**<sup>™</sup> names are registered trademarks of Sarin Ltd. All other brand and product names referred to herein are the trademarks of their respective owners.  
**Sarin Technologies Ltd.**



The following procedure describes how to install the DiaScan S+ machine:  
In case your machine arrived with its specific installation CD, please follow-up the installation steps in section A (Installation steps for a specific machine), otherwise, please follow the instructions in section B.

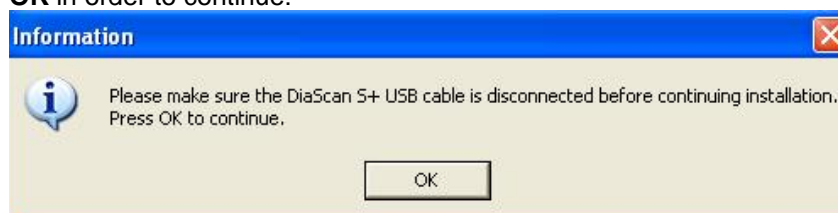
A. Installation steps for a specific machine:

1. Make sure that the USB plugs are not connected (as the sticker says).
2. Insert Advisor 2.31 installation CD (the CD for this specific machine) to the CD driver and install the software. For more details on the software installation please refer to Advisor 2.0 User Guide, chapter 3: "Installing the New Software" sections 1-5.
3. In the **Calibration Data on this CD** dialog – choose **Yes** and continue following the next installation steps :

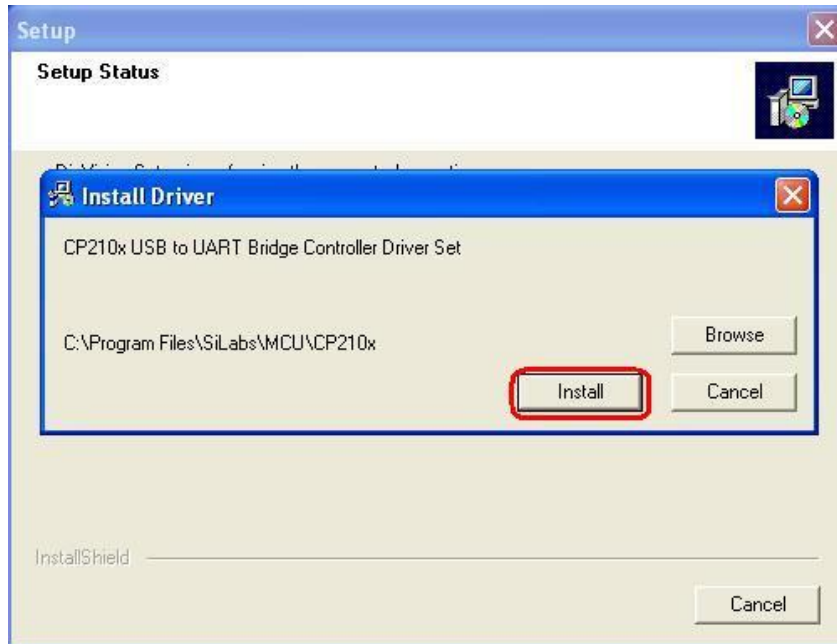


In case you chose **No**, skip the following steps and continue to follow the instruction in section B.3.

4. Please make sure that the DiaScan S+ USB cable is disconnected, and click **OK** in order to continue:



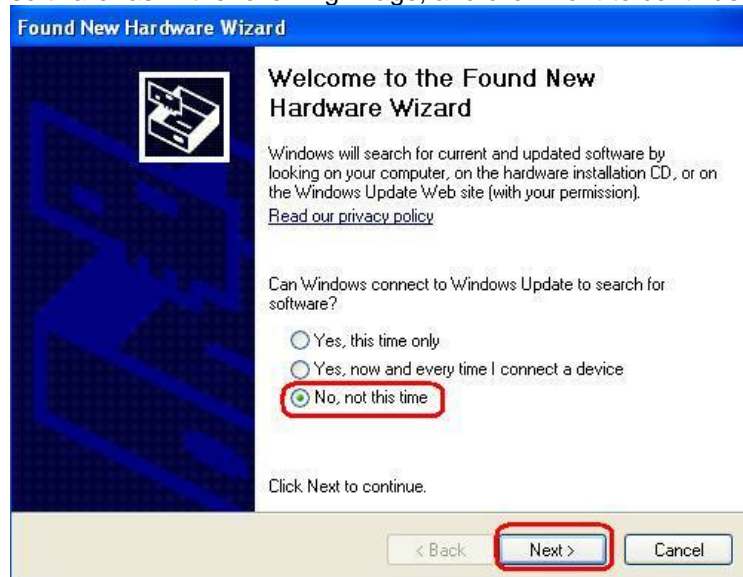
5. In the **UART Bridge Controller Driver Set** dialog – click **Install** in order to install the driver:



When the driver installation successfully completed, click **OK** in order to continue:



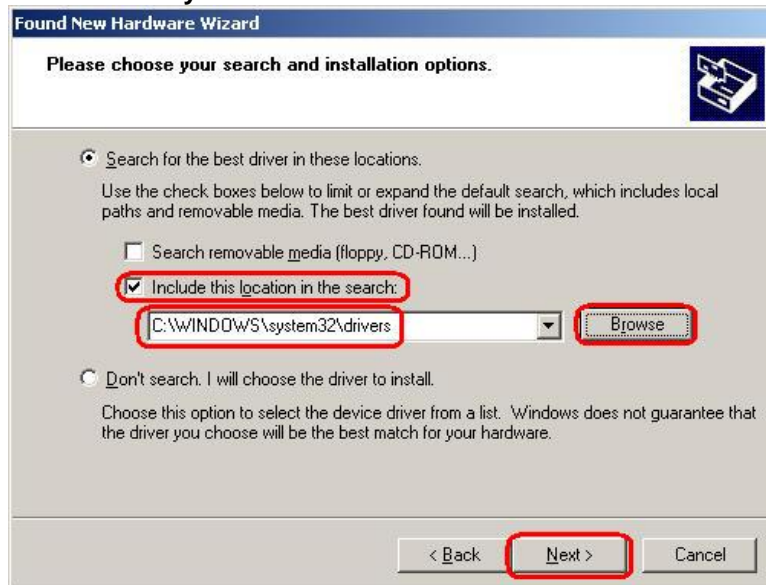
6. When the installation is completed, please restart your computer.
7. After Restart connect the USB plugs and follow the instructions in the **Found New Hardware Wizard** dialog:
  - Choose "**No, not this time**" for Windows Update to search for software- as in the following image, and click **Next** to continue:



- In the next step of the dialog – choose **Install from a list or specific location** and click **Next** to continue:



- In the next step of the dialog – choose **Include this location in the search**, click **Browse** button, Browse for folder **C:\Windows\system32\drivers** and click **Next** to continue:



- In the Hardware Installation message during the **BDR USB2 Camera V2** installation – choose **Continue Anyway**:



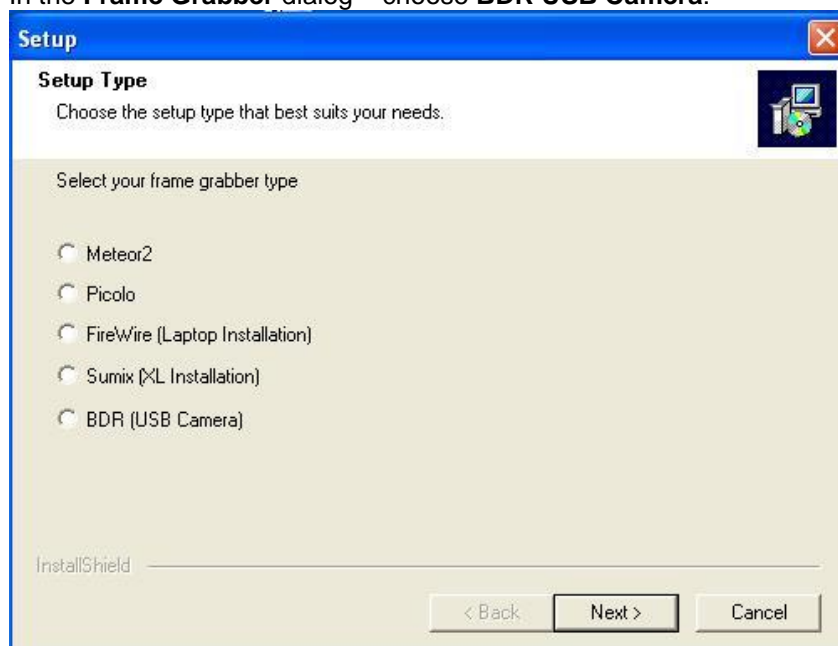
- Click **Finish** to complete the installation



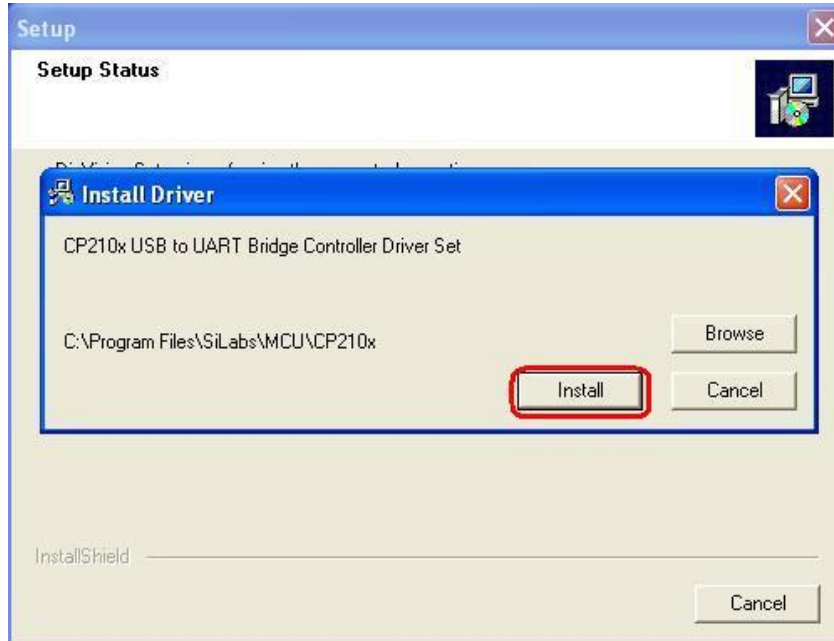
8. The DiaScan S+ installation has been completed. You can now start working.

## B. Installation steps:

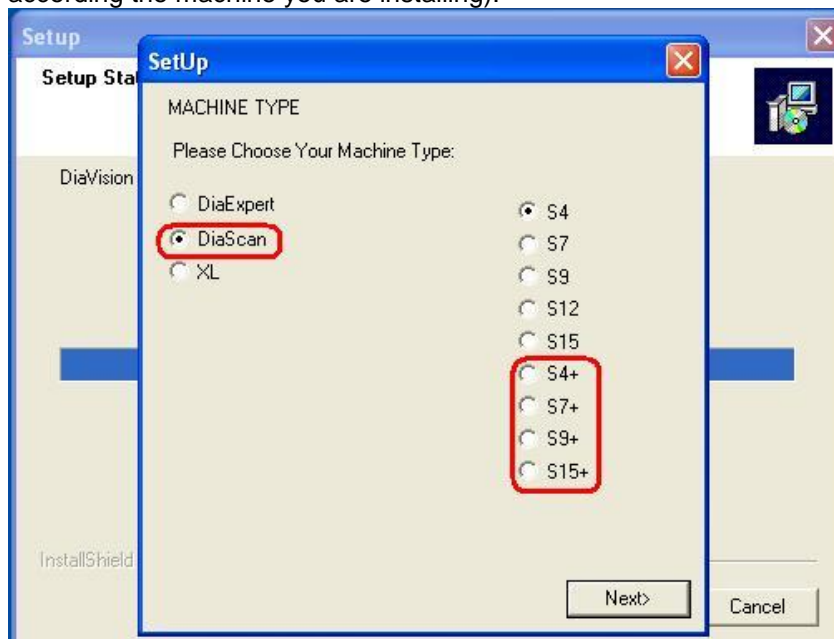
1. Make sure that the USB plugs are not connected (as the sticker says)
2. Insert Advisor 2.31 installation CD to the CD driver and install the software. For more details on the software installation please refer to Advisor 2.0 User Guide, chapter 3: "Installing the New Software" sections 1-5
3. In the **Frame Grabber** dialog – choose **BDR USB Camera**:



4. In the **UART Bridge Controller Driver Set** dialog – click **Install** in order to install the driver:



5. In the **Machine Type** dialog – choose **DiaScan S(X)+** (X = 4, 7, 9, 15 according the machine you are installing):



6. After Restart:
  - Connect the USB plugs.
  - Follow the instructions of the **Found New Hardware Wizard** dialog – refer to #7 in section A.