



DAS™

DIAMOND ASSAY SERVICE

QUICK INSTALLATION GUIDE

By Sarin Technologies Ltd.

Limited Warranty and Disclaimer

Sarin Technologies warrants this product to be free from defects in materials and workmanship under normal use for one year from purchase. All implied warranties and conditions (including any implied warranty of merchantability or fitness for a particular purpose) are disclaimed as to the product and this manual. Your exclusive remedy for breach of warranty will be the repair or replacement of this product or a refund of the purchase price at our discretion. In no event will Sarin Technologies Ltd. or its directors, officers, employees, or affiliates be liable to you for any consequential, incidental or indirect damages (including damages for loss of business, profits, business interruption, and the like), whether foreseeable or unforeseeable, arising out of the use or inability to use the product of this manual, regardless of the basis of the claim and even if Sarin Technologies Ltd. representative has been advised of the possibility of such damages.

Sarin Technologies Ltd. liability to you for actual damages for any cause whatsoever, and regardless of the form of the action, will be limited to the money paid for the product that caused the damages.

Copyright © 2012

All rights reserved. This document and the information contained herein belong to Sarin Ltd. ("Sarin") and may be used only as authorized by Sarin in writing. No part of this publication may be reproduced in any way without the prior written consent of Sarin.

This document is subject to change without notice.

Trademarks

The **Sarin**[®] and **DAS**[™] names are registered trademarks of Sarin Ltd. All other brand and product names referred to herein are the trademarks of their respective owners.

Sarin Technologies Ltd.

Introduction

Congratulations on purchasing the DiaScan S+ portable proportion scanner and joining the Diamond Assay Service. Once you have installed the software you only need to plug the machine into any 110/220 Volt outlet and connect it to a USB port on your PC.

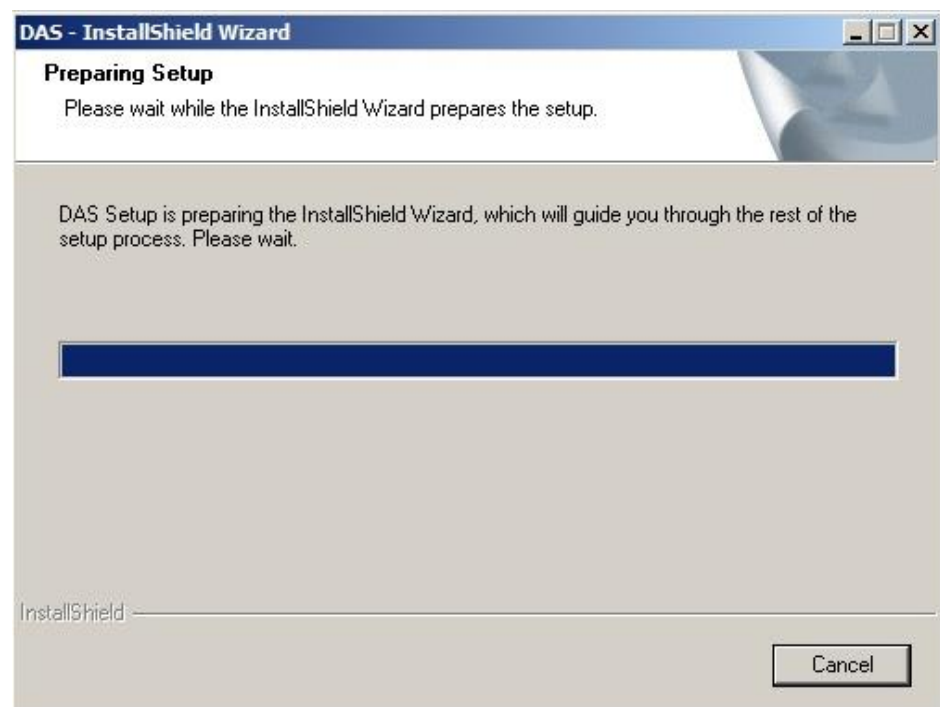
This document describes how to install the software in two simple steps.

STEP 1 – Start Installing the Software

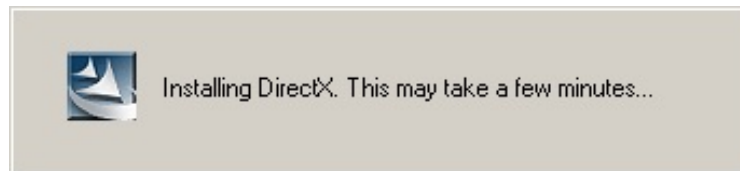
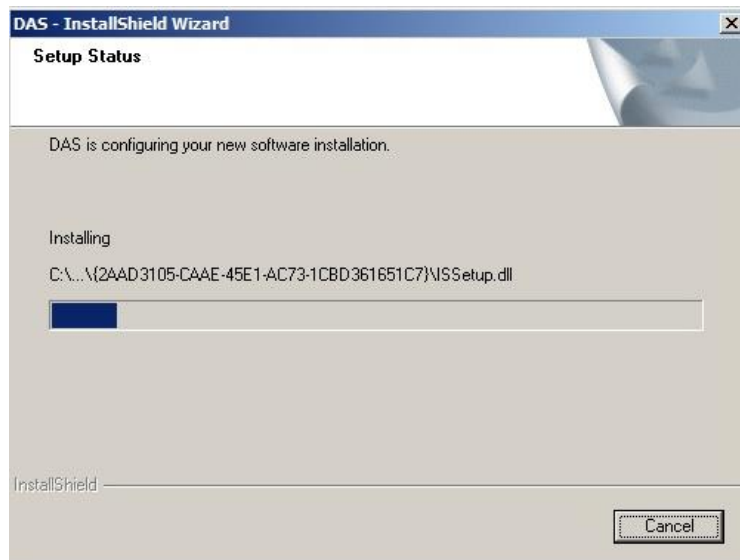
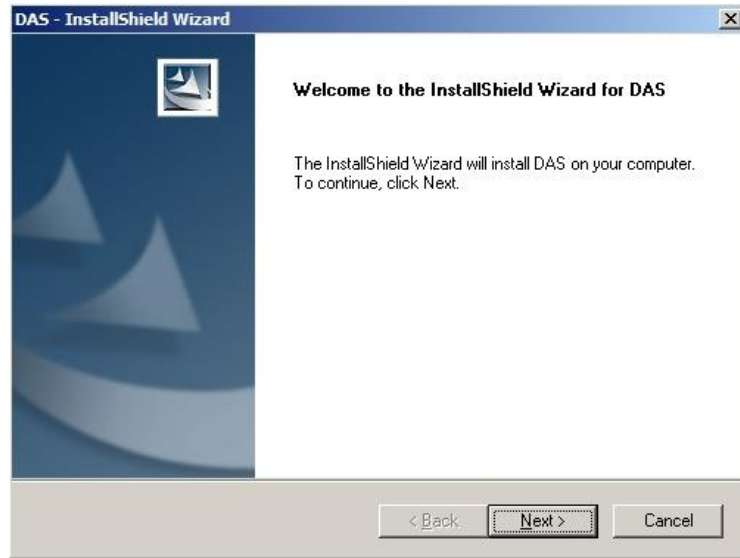
1. Please do not connect your DiaScan S+ until instructed to.

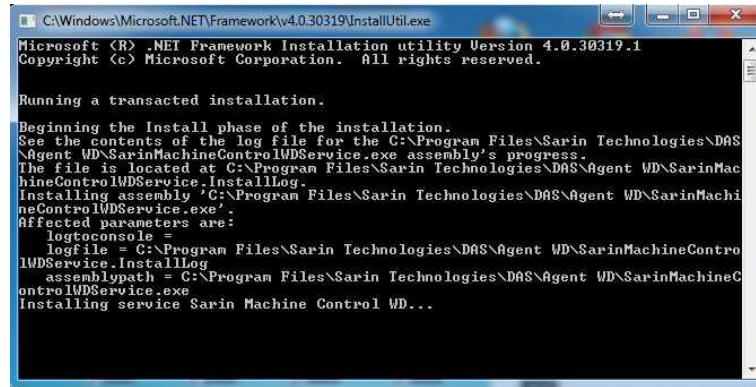
Load the installation CD into your PC CD/DVD reader, the installation should start automatically.

If not, open **My Computer**, right click the CD reader where you have loaded the Sarin Installation CD and click **Open**. From the displayed list of files, double click **Setup.exe**.



2. After reading the splash message, click the  button.

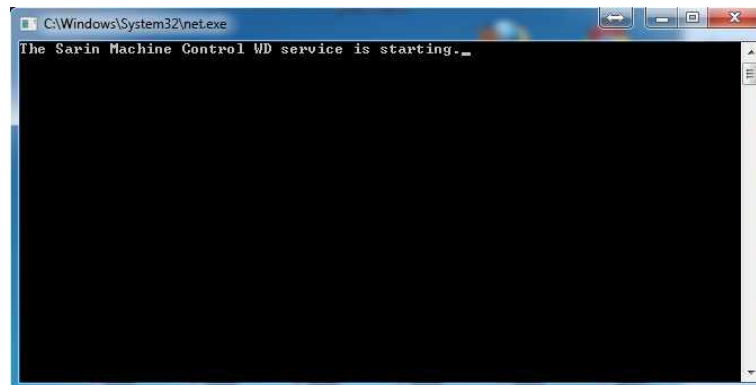




```
C:\Windows\Microsoft.NET\Framework\v4.0.30319\InstallUtil.exe
Microsoft (R) .NET Framework Installation utility Version 4.0.30319.1
Copyright (c) Microsoft Corporation. All rights reserved.

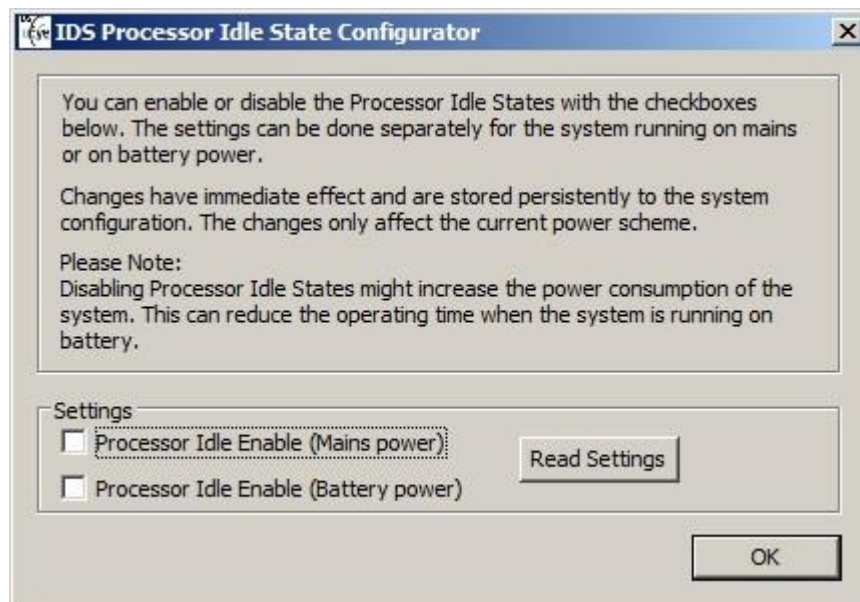
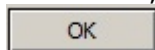
Running a transacted installation.

Beginning the Install phase of the installation.
See the contents of the log file for the C:\Program Files\Sarin Technologies\DAS
\Agent WD\SarinMachineControlWDSservice.exe assembly's progress.
The file is located at C:\Program Files\Sarin Technologies\DAS\Agent WD\SarinMac
hineControlWDSservice.InstallLog.
Installing assembly 'C:\Program Files\Sarin Technologies\DAS\Agent WD\SarinMach
ineControlWDSservice.exe':
Affected parameters are:
  logtoconsole =
  logfile = C:\Program Files\Sarin Technologies\DAS\Agent WD\SarinMachineContro
lWDSservice.InstallLog
  assemblypath = C:\Program Files\Sarin Technologies\DAS\Agent WD\SarinMachin
eControlWDSservice.exe
Installing service Sarin Machine Control WD...
```

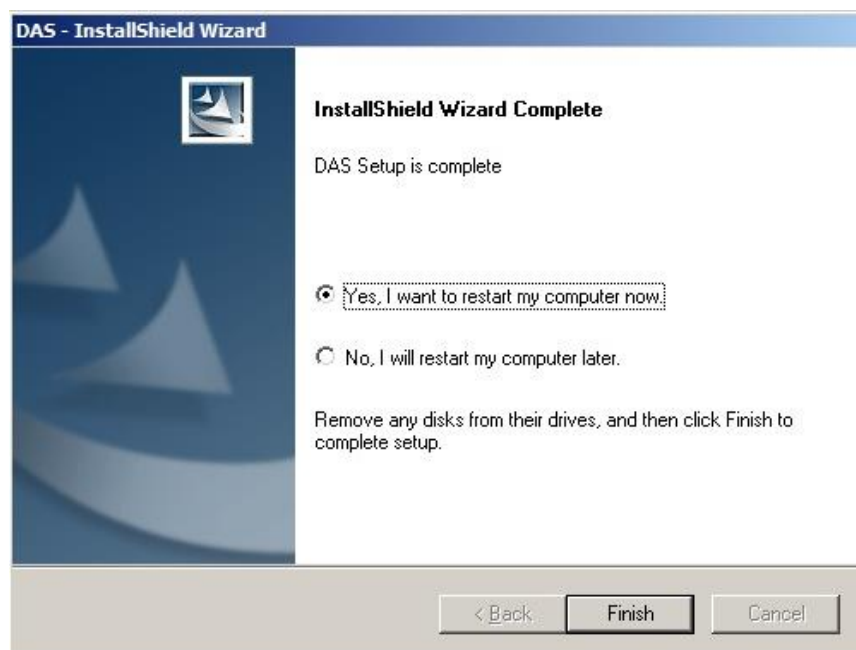


```
C:\Windows\System32\net.exe
The Sarin Machine Control WD service is starting._
```

1. On IDS Processor Idle State Configurator all Settings should be unchecked, so if setting appears checked then uncheck and press OK



2. Press Finish to restart the computer.



Step 2 – Restarting Your Computer

You have successfully installed DAS Agent

1. Connect the DiaScan S+ to a 110/220Volt power outlet, using the supplied power adapter.
2. Connect your DiaScan S+ to your computer, using the supplied USB Cable.

Connecting the DiaScan S+ invokes the **Found New Hardware Wizard** to complete the installation; it will take a few seconds till hardware is found and configured.

DAS support only the following browsers: **IE9, Firefox, Chrome and Safari**

Congratulations your program has been installed successfully.

You may now start exploring DAS using the following link:

<http://diamondassay.com/>

For questions, registration instructions and other guides please visit our technical knowledgebase at:

<http://help.diamondassay.com/DASHesk/index.php>